

MOUNTING INSTRUCTIONS FOR THE BUTLER SYSTEM ON THE CANAM SPYDER

THIS DEVICE IS DESIGNED FOR MOUNTING ON THE RIGHT HANDLEBAR OF THE CANAM SPYDER RT, ST, DR RS.

NOTE: ON SOME SPYDER MODELS THE DEVICE CAN BE INSTALLED ON THE LEFT HANDLEBAR IF DESIRED.

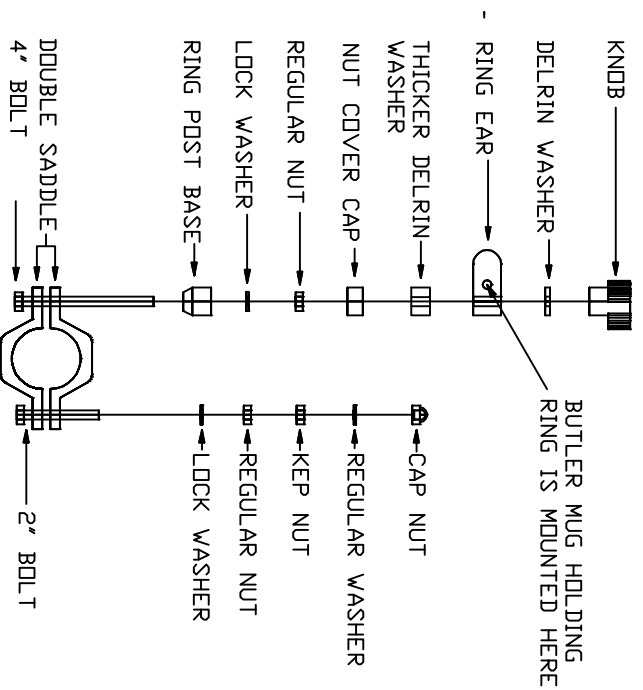
THE LONG BOLTS GO FROM THE BOTTOM UP, AND THE BRACKET MUST BE POSITIONED SO THAT THE BOLTS ARE VERTICAL. THE DEVICE IS SHIPPED ALREADY ASSEMBLED. TO MOUNT IT, THE DEVICE MUST BE DIS-ASSEMBLED. THESE PICTURES SHOW THE PROPER POSITION OF EACH PART.

THE FIRST STEP, AFTER DISASSEMBLY IS TO SECURELY FASTEN THE DOUBLE SADDLE CLAMP TO THE HANDLEBAR IN A LOCATION WHERE THE CLAMP CAN BE SECURELY TIGHTENED TO THE HANDLEBAR AND IS CONVENIENT TO USE. THE LONGER BOLT IS PLACED ON THE DRIVER SIDE OF THE HANDLEBAR.

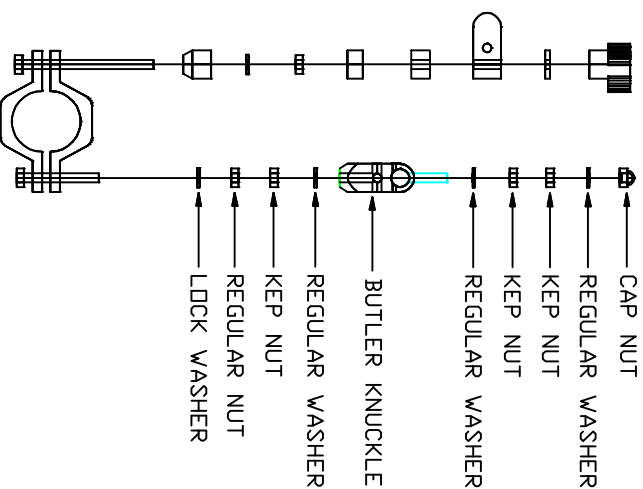
TIGHTEN BOTH BOLTS USING THE LOCK WASHERS AND REGULAR NUTS.

ONCE THE DOUBLE SADDLE CLAMP IS SECURELY FASTENED TO THE HANDLEBAR, APPLY THE REST OF THE PARTS AS SHOWN. ALL PARTS MUST BE SECURELY FASTENED BEFORE USING THE SYSTEM.

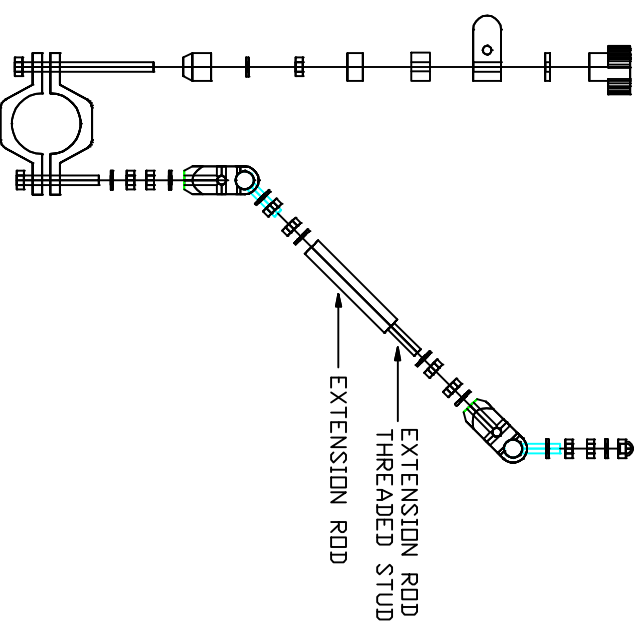
TYPE A (RT, ST, RS)



TYPE B (RT, ST, RS)



TYPE C (RT, ST, RS)



NOTE: THE LONGER BOLT GOES ON THE RIDER SIDE OF THE HANDLEBAR

IF ADDITIONAL INFORMATION IS REQUIRED PLEASE CALL GLASSACT AT 512-768-3908

MUGS, LIDS, STRAWS AND STRAW CAPS CAN BE ORDERED ON THE WEBSITE WWW.GLASSACT.COM, OR BY CALLING 512-768-3908